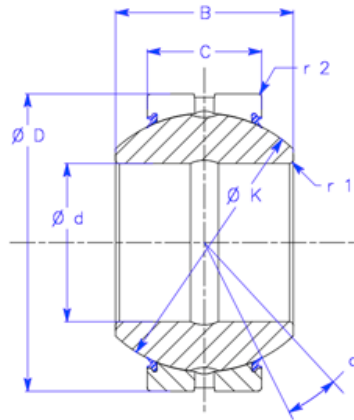




Enduro™ GEG.ES.2RS Series Bushings

ABI Industries
6505 San Leandro St.
Oakland, CA 94621
Tel: 510 613 8200
Fax: 510 613 8207



GEG..ES 2RS

GEG.ES 2RS metric series bush
(higher capacity than GE series)

Outer race with single axial fracture

ES suffix indicates lubrication ports and grooves in both inner and outer race

2RS indicates rubber seals on each side

All surfaces phosphate treated

Both races coated with MoS₂

Special order options include:

- High temperature seals
- Tapered and/or special sized bores
- Special coatings for various environments



Part Number	Ø d (mm)	Ø D (mm)	B (mm)	C (mm)	Ø K (mm)	r 1 (mm)	r 2 (mm)	a °	Dyn. C (kN)	Stat. Co (kN)	Weight (lbs)
GEG 15 ES2RS	15	30	16	10	25	0.3	0.3	21	21	106	0.106
GEG 17 ES2RS	17	35	20	12	29	0.3	0.3	21	30	146	0.176
GEG 20 ES2RS	20	42	25	16	36	0.6	0.6	18	48	240	0.335
GEG 25 ES2RS	25	47	28	18	41	0.6	0.6	18	62	310	0.439
GEG 30 ES2RS	30	55	32	20	47	0.6	1.0	16	80	400	0.653
GEG 35 ES2RS	35	62	35	22	53	0.6	1.0	19	100	500	0.886
GEG 40 ES2RS	40	68	40	25	60	0.6	1.0	17	127	640	1.18
GEG 45 ES2RS	45	75	43	28	66	0.6	1.0	17	156	780	1.54
GEG 50 ES2RS	50	90	56	36	80	0.6	1.0	17	245	1220	3.13
GEG 60 ES2RS	60	105	63	40	92	1.0	1.0	16	315	1560	4.61
GEG 70 ES2RS	70	120	70	45	105	1.0	1.0	17	400	2000	6.64
GEG 80 ES2RS	80	130	75	50	115	1.0	1.0	17	490	2450	7.96
GEG 90 ES2RS	90	150	85	55	130	1.0	1.0	16	610	3050	12.1
GEG 100 ES2RS	100	160	85	55	140	1.0	1.0	14	655	3250	13.3
GEG 110 ES2RS	110	180	100	70	160	1.0	1.0	15	950	4750	21.5
GEG 120 ES2RS	120	210	115	70	180	1.0	1.0	14	1080	5400	33.3
GEG 140 ES2RS	240	230	130	80	200	1.0	1.0	12	1360	6800	41.7
GEG 160 ES2RS	160	260	135	80	225	1.0	1.1	16	1530	7650	54.7
GEG 180 ES2RS	180	290	155	100	250	1.1	1.1	14	2120	10600	79.1
GEG 200 ES2RS	200	320	165	100	270	1.1	1.1	15	2320	11600	99.0
GEG 220 ES2RS	220	340	175	100	300	1.1	1.1	16	2550	12700	112
GEG 240 ES2RS	240	370	190	110	325	1.1	1.1	15	3030	15190	144
GEG 260 ES2RS	260	400	205	120	350	1.1	1.1	15	3570	17850	181
GEG 280 ES2RS	280	430	210	120	375	1.1	1.1	15	3800	19100	213