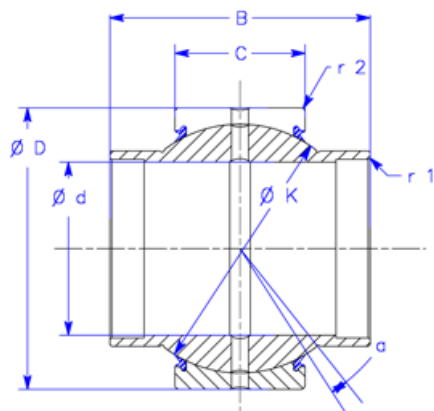




Enduro™ GEWZ.ES2RS Series Bushings

ABI Industries
6505 San Leandro St.
Oakland, CA 94621
Tel: 510 613 8200
Fax: 510 613 8207



GEWZ..ES 2RS

GEWZ.ES2RS inch series bushing
Outer race with single axial fracture
Inner race extended on both sides
ES suffix indicates lubrication ports and grooves in both inner and outer race
2RS indicates rubber seals on each side
All surfaces phosphate treated
Both races coated with MoS₂
Special order options include:
-High temperature seals
-Tapered and/or special sized bores
-Special coatings for various environments



Part Number	Ø d (inches)	Ø D (inches)	B (inches)	C (inches)	Ø K (inches)	r 1 (inches)	r 2 (inches)	a °	Dyn. C (kN)	Stat. Co (kN)	Weight (lbs)
GEWZ 12 ES2RS	0.500	0.8750	0.750	0.375	0.709	0.006	0.024	5	13	41	0.05
GEWZ 15 ES2RS	0.625	1.0625	0.938	0.469	0.906	0.006	0.024	5	22	65	0.08
GEWZ 19 ES2RS	0.750	1.2500	1.125	0.562	1.083	0.012	0.024	5	31	95	0.14
GEWZ 22 ES2RS	0.875	1.4375	1.312	0.656	1.260	0.012	0.024	5	42	127	0.21
GEWZ 25 ES2RS	1.000	1.6250	1.500	0.750	1.437	0.012	0.024	5	56	166	0.31
GEWZ 31 ES2RS	1.250	2.0000	1.875	0.937	1.791	0.024	0.024	5	86	260	0.59
GEWZ 34 ES2RS	1.375	2.1875	2.062	1.031	1.929	0.024	0.04	5	102	310	0.75
GEWZ 38 ES2RS	1.500	2.4375	2.250	1.125	2.154	0.024	0.04	5	125	375	1.09
GEWZ 44 ES2RS	1.750	2.8125	2.625	1.312	2.516	0.024	0.04	5	170	510	1.68
GEWZ 50 ES2RS	2.000	3.1875	3.000	1.500	2.874	0.024	0.04	5	224	670	2.44
GEWZ 57 ES2RS	2.250	3.5625	3.375	1.687	3.228	0.024	0.04	5	280	850	3.46
GEWZ 63 ES2RS	2.500	3.9375	3.750	1.875	3.622	0.04	0.04	5	355	1060	4.75
GEWZ 69 ES2RS	2.750	4.3750	4.125	2.062	3.937	0.04	0.04	5	415	1250	6.40
GEWZ 76 ES2RS	3.000	4.7500	4.500	2.250	4.311	0.04	0.04	5	500	1500	7.92
GEWZ 82 ES2RS	3.250	5.1250	4.875	2.437	4.685	0.04	0.04	5	585	1760	10.3
GEWZ 88 ES2RS	3.500	5.5000	5.250	2.625	5.039	0.04	0.04	5	680	2040	12.9
GEWZ 95 ES2RS	3.750	5.8750	5.625	2.812	5.394	0.04	0.04	5	780	2360	15.7
GEWZ 101 ES2RS	4.000	6.2500	6.000	3.000	5.748	0.04	0.04	5	900	2650	18.9
GEWZ 114 ES2RS	4.500	7.0000	6.750	3.375	6.476	0.04	0.04	5	1120	3400	27.0
GEWZ 127 ES2RS	5.000	7.7500	7.500	3.750	7.205	0.04	0.04	5	1400	4150	36.7
GEWZ 152 ES2RS	6.000	8.7500	8.250	4.125	8.150	0.04	0.04	5	1730	5200	45.5